

HOW TO RUN

A CHESS-A-THON FUNDRAISER



Chess-a-thon make for great fundraisers! Participants get to learn a new skill and fundraise all at the same time. Try a chess-a-thon the next time you're fundraising for a school, extra-curricular program, or club.



Chess-a-Thon 101

What is a Chess-a-Thon?

Chess-a-thon are a type of a-thon fundraiser. Just like read-a-thon and walk-a-thon, students will commit to playing a certain amount of chess and collect donations for their efforts.



Chess-a-thon are great because they give students the chance to learn or improve their chess skills.

Chess-a-Thon Goals & Rules

Length of Time

You can choose any length of time between 10 days and 1 month.

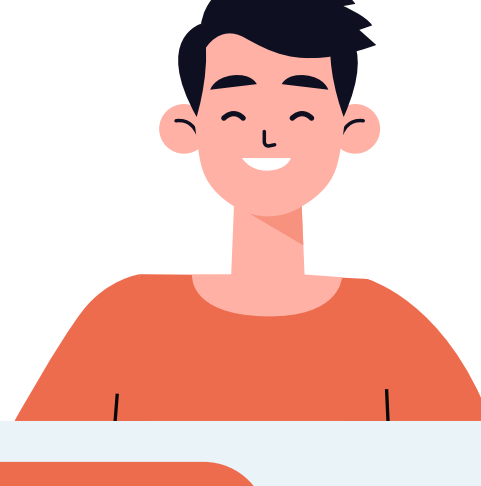
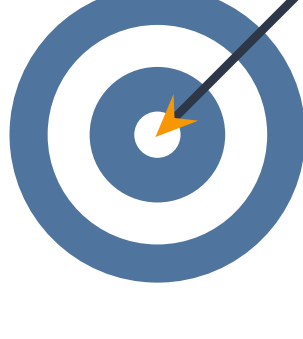


Grade Considerations

For younger kids or beginners, you can decide what rules of chess to follow.

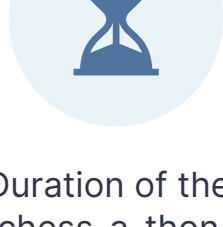
Chess Goal

The chess goal should be dependent on the length of time and the grade the students are in.



Recommended Starting Rules

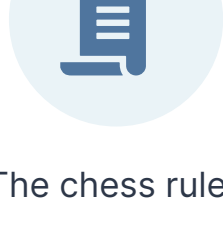
Before you start telling students about the chess-a-thon, you should decide the following:



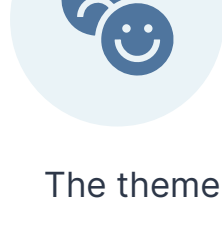
Duration of the chess-a-thon



How many games or hours to play



The chess rules



The theme



Recommend Chess-a-Thon Duration

- 10 days for pre-school and elementary schools
- 14 days for middle and high schools



Collection Donations

- Start telling students about the chess-a-thon at least 10 days before it starts.
- Students should be signed up in your fundraising system and gathering donations at least 7 days before the fundraiser starts.



Confirm That Everyone Knows What to Do

- On the day the fundraiser starts, be sure to re-explain the rules and encourage students to continue fundraising.
- Halfway through the read-a-thon, remind students how many days they have left to finish their books.

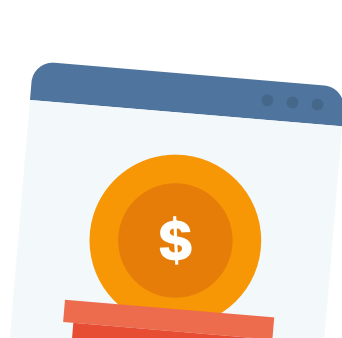
What Do You Need to Run a Chess-a-Thon?

Power it With FutureFund

FutureFund's built-in pledge campaigns allow you to easily collect money and keep donations/pledges organized. Since parents cover payment processing fees, 100% of the funds raised go to your school!



FutureFund is easy to use



Accept online donations



A single tool to power your entire Chess-a-thon!

Chess-a-Thon Templates & Resources

Sample chess-a-thon rules

These rules are a great starting point for organizing your move-a-thon.

—

To participate in the move-a-thon, you sign up through FutureFund by [date]. The move-a-thon takes place from [date to date], so make sure you block it off in your calendar! And don't forget to tell your family that you're fundraising, so they can donate (ask your parents for help, so they can ask their friends and coworkers too!).

All donations will be collected through FutureFund through this link: [link].

Sample chess-a-thon event description

Unsure of where to start? Use this sample student and parent messaging to get the ball rolling!

—

Checkmate! Starting [date], [school name] will be hosting a chess-a-thon to help fundraise for [cause]. You can help by playing chess as much as you can! Parents, each student will be collecting pledges online through FutureFund: [link]. Please spread the word to your family, friends, and coworkers to help make this fundraiser a success!

Set up online pledges with FutureFund

Let parents and supporters donate online with FutureFund's online pledges. Try it out for free!

—

Make your donation easily and instantly! Click this [link] to make your donation through secure credit or debit card payment. If you prefer to donate by cash or check, just donate directly to the student you're supporting. Thank you for your support!

